

LaseTLP-ML

TRUCK LIFT PREVENTION MULTILAYER

Since one or more twistlocks are regularly forgotten when manually unlocking the container twistlocks, dangerous situations arise for people and materials. The LaseTLP-ML measuring system prevents a truck-trailer combination from being lifted by twistlocks that are still locked during container lifting.

As an extension of the system it could also detect truck movement and check if the cabin is in the drop down area.

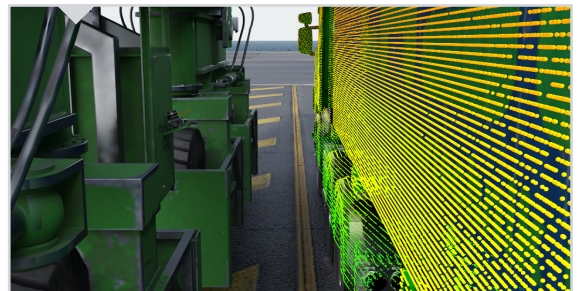
THE MEASUREMENT SYSTEM

This innovative and safety-relevant solution was developed to avoid serious accidents during container truck unloading due to defective or locked twistlocks. The measuring system can be used for various crane systems such as RTG, RMG and ARMG.

LASE developed a reliable system that detects the lifting of the trailer as early as possible. Depending on the type of installation, the application consists of one or two multilayer laser scanners, which are mounted either in the middle of the crossbeam or the ends of the crossbeam or the crane. The scanners face forward from the crane onto the truck/ trailer in the direction of the truck zone. The scanners, multiple up to 64 scan planes, measure the gap between the lifted container and the truck trailer to monitor their respective positions relative to each other when the container is lifted. If both objects raise at the same time, the system interrupts the lifting process to prevent accidents. In addition, the application has an extremely fast response time. The application could be retrofitted to any kind of crane or could be used by OEMs directly.



Truck lifting can be easily prevented with the retrofittable LaseTLP-ML system.



A multilayer scanner is mounted to the crane and detect separation between the container and the truck chassis and thus prevent a truck lift.

THE FEATURES

- ✓ Applicable for all types of truck trailers (20", 40" etc.)
- ✓ Exact gap measurement between trailer and container
- ✓ Easily adaptable also for retrofit measures
- ✓ Immediate 3D scan and feedback to the crane driver
- ✓ Easy integration of the system

THE BENEFITS

- ✓ Highly reliable system
- ✓ Avoidance of accidents
- ✓ Time-efficient process optimization
- ✓ Damage prevention to container and chassis
- ✓ Reduction of material wear
- ✓ Retrofit or OEM product

EXTENSION

- ✓ Truck Movement Detection
- ✓ Cabin Protection

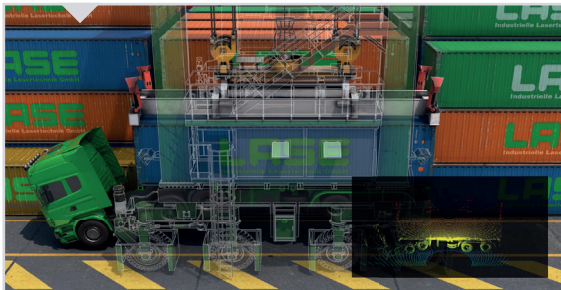
THE FUNCTION PRINCIPLE



Dangerous situation: A truck trailer lifted by twistlocks.



The multilayer scanner on the crane detects the separation between the chassis and the load on the truck.



An alarm is triggered in the event of a hazardous situation.



The new LASE multilayer scanner.

WATCH
THE
PRODUCT
VIDEO



Scan the QR code with your mobile phone. Discover the product video and more innovative solutions from LASE!

GLOBAL PLAYER FOR LASER MEASUREMENT SYSTEMS

For more than 30 years, LASE Industrielle Lasertechnik GmbH has been the global contact for high-precision and robust laser measurement technology for the port sector. With our 1D, 2D, 3D and multilayer sensors as well with our high sophisticated application software, our systems stand for more accurate, safe and efficient container handling. Our goal is to drive the automation of the port industry forward. With 30 offices worldwide through subsidiaries and business partners, we are always at your side.