

LaseAFM-Flex

AUTOMATIC FREIGHT MEASUREMENT

Thanks to the accurate, multidimensional acquisition of cargo dimensions, the LaseAFM-Flex system ensures automated and time-saving work processes in the field of internal logistics or shipping. The system is ideally suited for measuring cargo of odd-shape and oversized items. Additional options such as high-resolution image documentation, elevated version or mounting on a suspended structure offer maximum flexibility. Furthermore, the LaseAFM-Flex system can also be used outdoors.

THE MEASUREMENT SYSTEM

LaseAFM-Flex includes two high-precision 3D laser scanners that record the dimensions and volumes of freight items in just a few seconds. The data is transferred to the customer's warehouse management and/or merchandise management system via a customized interface and is immediately available there for further processing.

The additional use of modern HD cameras enables high-resolution image documentation of all freight items and ensures complete freight information and protection against complaints regarding damage.

The laser scanners (and optional HD cameras) can be flexibly mounted on the ceiling, walls, or individual mounting constructions close to the measuring site. This means that the measuring system does not interfere with the travel paths of forklift trucks or industrial trucks.

The automatic, laser-based recording of volume, dimensions, weight, freight ID and image data excludes manual or transmission errors in the documentation and ensures reliable and complete data.



The laser scanners can be flexibly mounted on the ceiling, walls, or individual mounting constructions close to the measuring site.

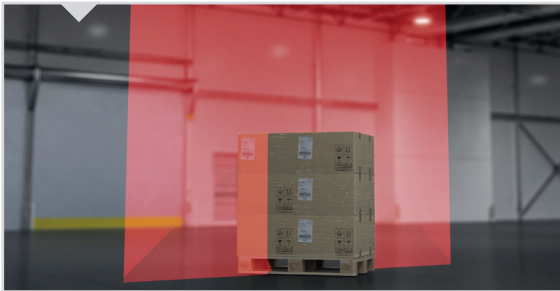
THE FEATURES

- ✓ Automatic dimension and volume measurement
- ✓ Integration into existing IT system landscape
- ✓ Applicable for „standard pallets“ and bulky/unit loads
- ✓ High-resolution image documentation (camera module)
- ✓ Automatic weight recording (module weight)
- ✓ Freight identification (module ident)

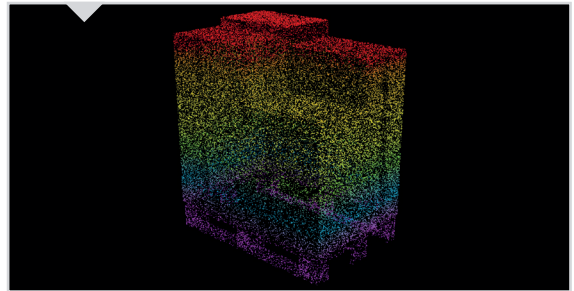
THE BENEFITS

- ✓ Flexible assembly options
- ✓ Fast and efficient
- ✓ Long-range
- ✓ High accuracy
- ✓ Saving of personnel resources
- ✓ Elimination of manual error sources
- ✓ Reliable data quality

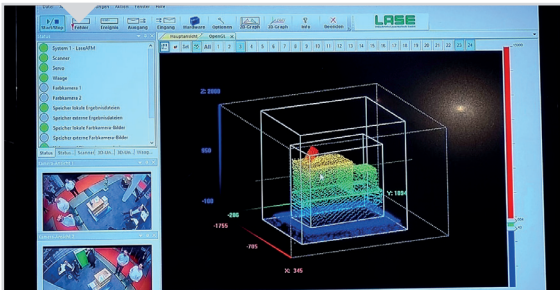
THE FUNCTION PRINCIPLE



From their individual position, the laser scanners measure the freight from above.



The measurement data is assembled into a 3D profile. This results in the dimensions and the volume.



All relevant data is transferred to the merchandise management system and can be viewed directly.

WATCH
THE
PRODUCT
VIDEO



Scan the QR code with your mobile phone. Discover the product video and more innovative solutions from LASE!

GLOBAL PLAYER FOR LASER MEASUREMENT SYSTEMS

For more than 30 years, LASE Industrielle Lasertechnik GmbH has been the global contact for high-precision and robust laser measurement technology for the industrial sectors port, bulk material handling, steel and logistics. With our 1D, 2D, 3D and multi-layer sensors as well as in-house developed applications, our systems stand for more safety and efficiency. Our goal is to drive the automation of industry with easily retrofittable solutions. With 30 offices worldwide through subsidiaries and partners, we are always at your side.