

LaseAFM-Tower

AUTOMATIC FREIGHT MEASUREMENT

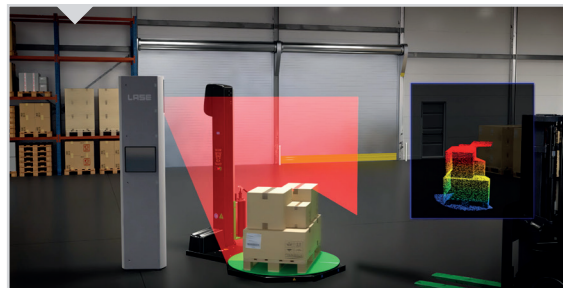
LaseAFM-Tower is the optimal solution for laser-based dimension and volume measurement of pallets on semi-automatic wrapping machines/pallet wrappers. Due to the practical assembly of all components in a regular column or tower, the measuring system is ready for use in a very short time.

THE MEASUREMENT SYSTEM

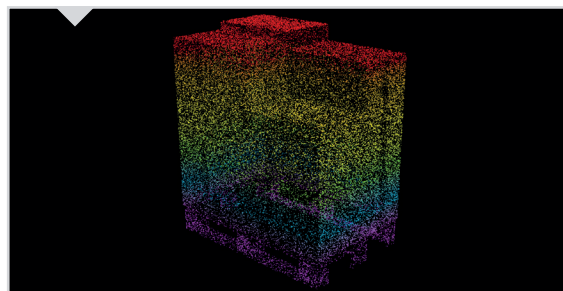
The powerful application LaseAFM-Tower measuring system combines a two-dimensional scan plane and the turntable's rotation to record the dimensions and volume of pallets on a wrapping machine in just a few seconds.

Automatic and precise measurement during the wrapping process represents a time-saving possibility to obtain resilient and complete freight information and display it in customer-supplied warehouse management or inventory control systems.

By using a high-resolution HD camera, a complete image documentation of all freight items is achieved. Direct measurement feedback is displayed to the personnel on-site via touchscreen. All components of the measuring system LaseAFM-Tower are contained in a stable metal column (dimensions approx. 60 x 30 x 250 cm LxWxH). This space-saving variant can be ideally integrated into a wide variety of environments and can be installed in a short time.



The sensor is located in a stable stainless steel column. It is placed next to the wrapper.



The application creates a 3D profile of the cargo. This forms the basis for further calculations.

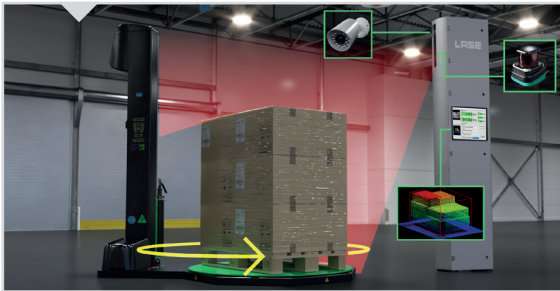
THE FEATURES

- ✓ Precise measurement of freight dimensions and volumes
- ✓ High-resolution image documentation
- ✓ Automatic weight recording (weight module)
- ✓ Integration into existing IT system landscape

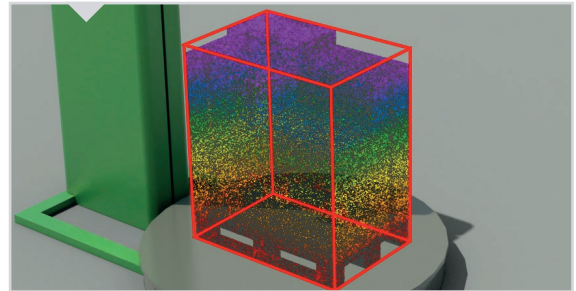
THE BENEFITS

- ✓ Practical out-of-the-box measuring system
- ✓ Time-saving due to measurement in the winding process
- ✓ Saving of personnel resources
- ✓ Elimination of manual error sources
- ✓ Reliable data quality

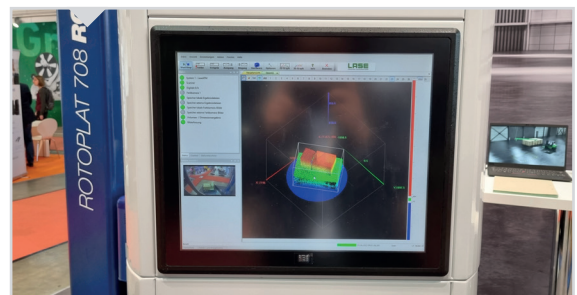
THE FUNCTION PRINCIPLE



The sensor, an HD camera and a PC are built into the stainless steel column. The measurement takes place during wrapping.



The application creates a cuboid that „encloses“ the piece of cargo. These are the maximum dimensions.



On the screen in the tower you can see the most important information at any time. The data is transmitted directly to the merchandise management system.



Scan the QR code with your mobile phone. Discover the product video and more innovative solutions from LASE!

GLOBAL PLAYER FOR LASER MEASUREMENT SYSTEMS

For more than 30 years, LASE Industrielle Lasertechnik GmbH has been the global contact for high-precision and robust laser measurement technology for the industrial sectors port, bulk material handling, steel and logistics. With our 1D, 2D, 3D and multi-layer sensors as well as in-house developed applications, our systems stand for more safety and efficiency. Our goal is to drive the automation of industry with easily retrofittable solutions. With 30 offices worldwide through subsidiaries and partners, we are always at your side.